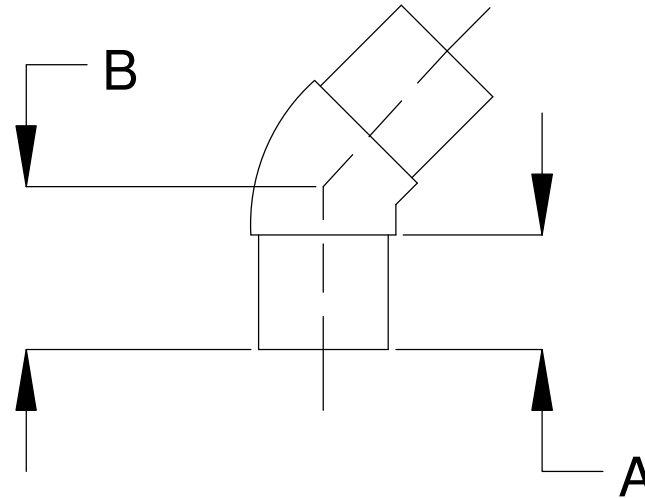


Specifications for HDPE

All fittings for HDPE pipe meet or exceed the following specifications:

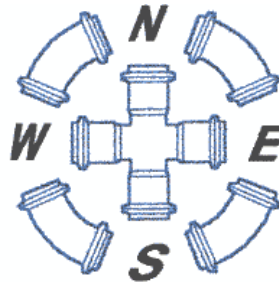
ASTM F714	Standard Specification for Polyethylene (PE) Plastic Pipe (SDR-PR). Based on Outside Diameter.
ASTM D1248	Standard Specification for Polyethylene Plastic Molding Extrusion
ASTM D3350	Standard Specification for Polyethylene Plastic Pipe Fittings Material
ASTM D3035	Standard Specification for Polyethylene (PE) Plastic Pipe (SDR-PR). Based on Controlled Outside Diameter

SIZE	A	B
2"	2.5	3.25
3"	3	5.38
4"	3	5.38
6"	4	6.75
8"	6	10



DISCLAIMER - PLEASE READ

- 1) All dimensions approximate, subject to change without notice
 --Angle tolerance is +/- 2 degrees
 --All other dimensions to +/- 1"
- 2) This drawing only applicable if a copy is referenced at time of order.
 --Without a copy of drawing, fitting construction may differ from that shown.
- 3) Subject to Specified Fittings Standard Terms and Conditions.



SPECIFIED FITTINGS
 164 WEST SMITH ROAD
 BELLINGHAM WA 98226

TITLE
**IPS HDPE 45-deg. BENDS,
 INJECTION MOLDED**

SIZE	CAGE CODE	DWG NO	REV
------	-----------	--------	-----

A4

SCALE NOT TO SCALE	SHEET 1/1
-----------------------	--------------