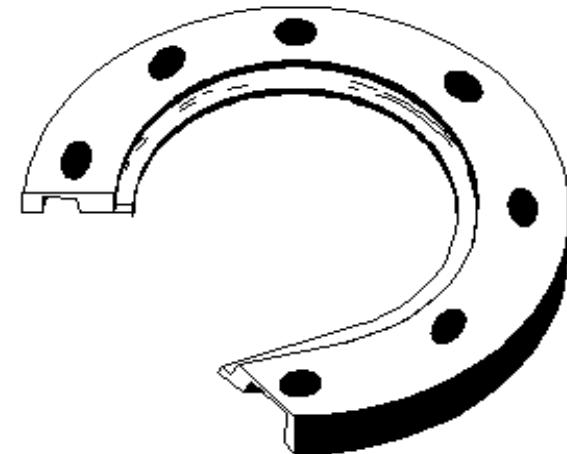
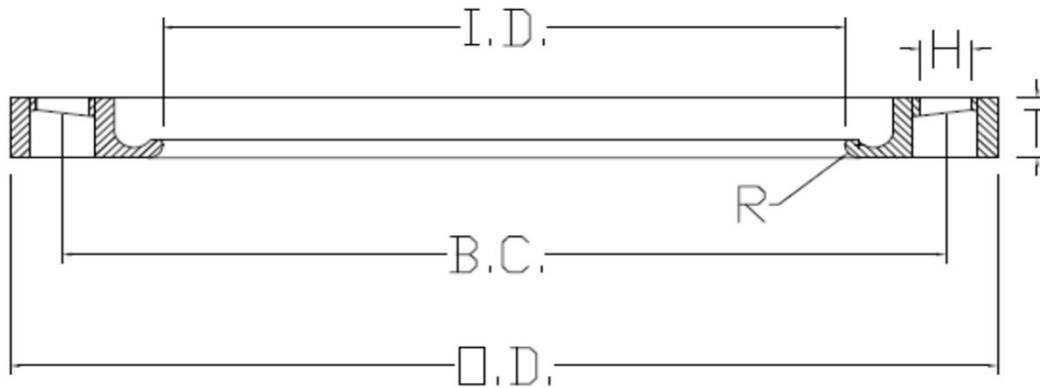


SPECIFIED FITTINGS, LLC

164 W. SMITH RD
BELLINGHAM, WA 98226
888-734-8846 (T)
888-734-8258 (F)
spec@specfit.com

483 STEVENSVILLE AIRPORT RD.
STEVENSVILLE, MT 59870
406-777-3466 (T)
406-777-7181 (F)
sales@specfit.com

www.specfit.com



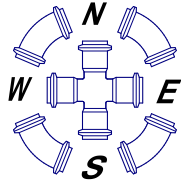
Description: IPS 316 STAINLESS STEEL
FLANGE RINGS
Material: 316 STAINLESS STEEL
Size: 2" - 24"
CLASS 150, CLASS 200
PSI RATINGS: 150, 200

Version 1.5, Copyright 2017

NOTE:

Fittings are manufactured and tested to the requirements of ASTM D3035, D3261, AWWA C901 or C906, and FM 1613. These fittings are tested to the requirements of ASTM D3261 and are compatible for heat fusion with any pipe and or fitting of compatible resin. Made from PE3408/3608 or PE4710 material. All raw material shall comply with NSF-61. Other OD's, SDR's and Pressure Ratings available upon request. Per FM 1613 and AWWA C906, the working pressure rating equals the pressure class with an allowance included in the WPR for pressure surge.
FOR DISCLAIMER REFER TO FM DIMENSION CATALOG.

PAGE #25



SPECIFIED FITTINGS, LLC

**164 W. SMITH RD
BELLINGHAM, WA 98226**
888-734-8846 (T)
888-734-8258 (F)
spec@specfit.com

**483 STEVENSVILLE AIRPORT RD.
STEVENSVILLE, MT 59870**
406-777-3466 (T)
406-777-7181 (F)
sales@specfit.com

www.specfit.com

IPS 316 STAINLESS STEEL FLANGE RING DIMENSION CHART

SIZE	O.D.	T	I.D.	BOLTS	H	B.C.	R	PRESSURE	PART #
								CLASS	
2"	6	0.75	2.46	4	0.75	4.75	0.27	150/200	BR2FM2006SS
3"	7.5	0.94	3.6	4	0.75	6	0.33	150/200	BR3FM2006SS
4"	9	0.94	4.6	8	0.75	7.5	0.39	150/200	BR4FM2006SS
5"	10	0.94	5.69	8	0.88	8.5	0.44	150/200	BR5FM2006SS
6"	11	1	6.75	8	0.88	9.5	0.44	150/200	BR6FM2006SS
8"	13.5	1.12	8.75	8	0.88	11.75	0.44	150/200	BR8FM2006SS
10"	16	1.19	10.92	12	1	14.25	0.42	150/200	BR10FM2006SS
12"	19	1.25	12.92	12	1	17	0.42	150/200	BR12FM2006SS
14"	21	1.38	14.18	12	1.13	18.75	0.5	150	BR14FM1506SS
14"	21	1.78	14.18	12	1.13	18.75	0.41	200	BR14FM2006SS
16"	23.5	1.44	16.19	16	1.13	21.25	0.5	150	BR16FM1506SS
16"	23.5	2.17	16.19	16	1.13	21.25	0.4	200	BR16FM2006SS
18"	25	1.56	18.2	16	1.25	22.75	0.5	150	BR18FM1506SS
18"	25	2.06	18.2	16	1.25	22.75	0.4	200	BR18FM2006SS
20"	27.5	1.69	20.25	20	1.25	25	0.5	150	BR20FM2006SS
20"	27.5	2.27	20.25	20	1.25	25	0.31	200	BR20FM2006SS
22"	29.5	1.81	22.25	20	1.38	27.25	0.5	150	BR22FM1506SS
22"	29.5	2.43	22.25	20	1.38	27.25	0.31	200	BR22FM2006SS
24"	32	1.88	24.25	20	1.38	29.28	0.5	150	BR24FM1506SS
24"	32	2.6	24.25	20	1.38	29.5	0.31	200	BR24FM2006SS