

SPECIFIED FITTINGS, LLC

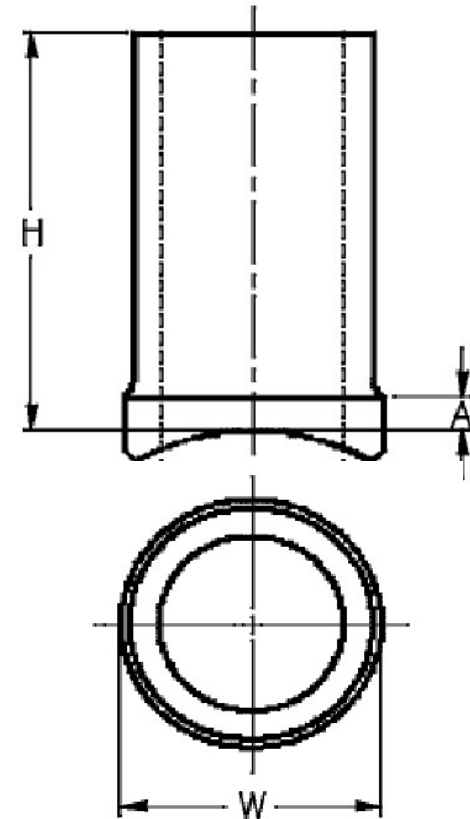
164 W. SMITH RD
 BELLINGHAM, WA 98226
 888-734-8846 (T)
 888-734-8258 (F)
spec@specfit.com

483 STEVENSVILLE AIRPORT RD.
 STEVENSVILLE, MT 59870
 406-777-3466 (T)
 406-777-7181 (F)
sales@specfit.com

www.specfit.com

Main Size	Outlet Size	H	W	A	CL/150 PART #	CL/200 PART #
3"-20"	2"	6	2.875	1.5	HD701SIZEFM150	HD701SIZEFM200
4"-20"	3"	6	4	1.5	HD701SIZEFM150	HD701SIZEFM200
5"-20"	4"	6.5	4.9	1.5	HD701SIZEFM150	HD701SIZEFM200
6"-20"	5"	8.5	6.25	1.5	HD701SIZEFM150	HD701SIZEFM200
8"-20"	6"	8.5	6.9	1.5	HD701SIZEFM150	HD701SIZEFM200
10"-20"	8"	9	9.1	1.5	HD701SIZEFM150	HD701SIZEFM200
12"-20"	10"	9	12	1.5	HD701SIZEFM150	HD701SIZEFM200
14"-20"	12"	10.5	14	1.5	HD701SIZEFM150	HD701SIZEFM200
16"-20"	14"	10.5	16	1.5	HD701SIZEFM150	HD701SIZEFM200
18"-20"	16"	10.5	18	1.5	HD701SIZEFM150	HD701SIZEFM200
20"-24"	18"	11.5	20	1.5	HD701SIZEFM150	HD701SIZEFM200

PART # EXAMPLE 12X4 BRANCH SADDLE CL 150 = HD701124FM150
 (WHEN PART NUMBERING OUTLET SIZE ALWAYS FOLLOWS MAIN SIZE)



Description: IPS HDPE BRANCH SADDLES
 PLAIN-ENDS
 Material: HDPE
 Size: 3"-24" X 2"-18"
 CLASS 150, CLASS 200
 PSI RATINGS 150, 200

NOTE:

Fittings are manufactured and tested to the requirements of ASTM D3035, D3261, AWWA C901 or C906, and FM 1613. These fittings are tested to the requirements of ASTM D3261 and are compatible for heat fusion with any pipe and or fitting of compatible resin. Made from PE3408/3608 or PE4710 material. All raw material shall comply with NSF-61. Other OD's, SDR's and Pressure Ratings available upon request. Per FM 1613 and AWWA C906, the working pressure rating equals the pressure class with an allowance included in the WPR for pressure surge.

FOR DISCLAIMER REFER TO FM DIMENSION CATALOG.