

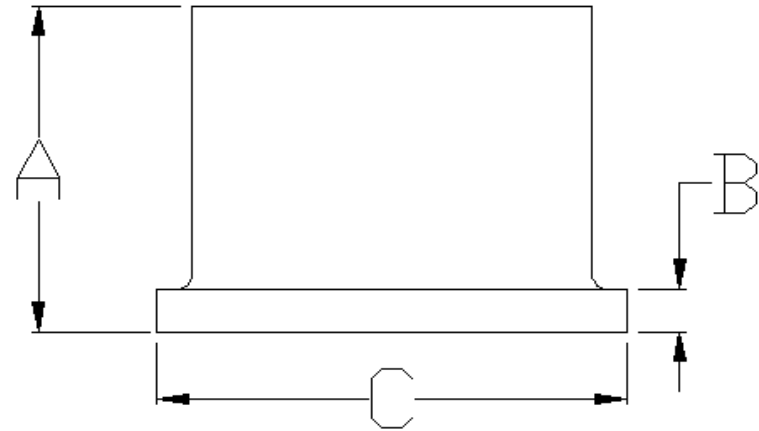
SPECIFIED FITTINGS, LLC

**164 W. SMITH RD
BELLINGHAM, WA 98226
888-734-8846 (T)
888-734-8258 (F)
spec@specfit.com**

**483 STEVENSVILLE AIRPORT RD.
STEVENSVILLE, MT 59870
406-777-3466 (T)
406-777-7181 (F)
sales@specfit.com**

www.specfit.com

SIZE	A	B	C	PRESSURE	PART #
				CLASS	
4"	6	0.68	6.56	150	HD5204FM150DIPS
4"	6	0.68	6.56	200	HD5204FM200DIPS
6"	8	1.08	8.6	150	HD5206FM150DIPS
6"	8	1.08	8.6	200	HD5206FM200DIPS
8"	9	1.38	10.72	150	HD5208FM150DIPS
8"	9	1.38	10.72	200	HD5208FM200DIPS
10"	9	1.88	13.17	150	HD52010FM150DIPS
10"	9	1.88	13.17	200	HD52010FM200DIPS
12"	11	2.13	15.97	150	HD52012FM150DIPS
12"	11	2.13	15.97	200	HD52012FM200DIPS
14"	12	2.25	17.4	150	HD52014FM150DIPS
14"	12	2.25	17.4	200	HD52014FM200DIPS
16"	11.5	2.88	19.9	150	HD52016FM150DIPS
16"	11.5	2.88	19.9	200	HD52016FM200DIPS
20"	11.5	3.63	23.66	150	HD52020FM150DIPS
20"	11.5	3.63	23.66	200	HD52020FM200DIPS
24"	11.5	4.13	27.9	150	HD52024FM150DIPS
24"	11.5	4.13	27.9	200	HD52024FM200DIPS



Description: DIPS HDPE MOLDED FLANGE ADAPTER
PLAIN-END
Material: HDPE
Size: 4" - 24"
CLASS 150, CLASS 200
PSI RATINGS 150, 200

NOTE:

Molded fittings are manufactured and tested to the requirements of ASTM D3035, D3261, AWWA C901 or C906, and FM 1613. These fittings are tested to the requirements of ASTM D3261 and are compatible for heat fusion with any pipe and or fitting of compatible resin. Made from PE3408/3608 or PE4710 material. All raw material shall comply with NSF-61. Other OD's, SDR's and Pressure Ratings available upon request. Per FM 1613 and AWWA C906, the working pressure rating equals the pressure class with an allowance included in the WPR for pressure surge.
FOR DISCLAIMER REFER TO FM DIMENSION CATALOG.