

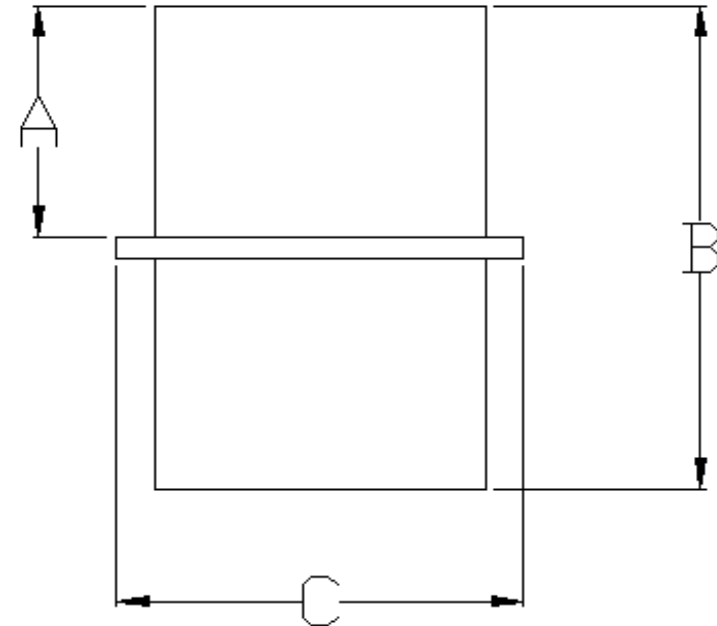
SPECIFIED FITTINGS, LLC

164 W. SMITH RD
 BELLINGHAM, WA 98226
 888-734-8846 (T)
 888-734-8258 (F)
spec@specfit.com

483 STEVENSVILLE AIRPORT RD.
 STEVENSVILLE, MT 59870
 406-777-3466 (T)
 406-777-7181 (F)
sales@specfit.com

www.spectit.com

SIZE	A	B	C	CLASS	PART #
4"	5.25	11	6.56	150	HD6914FM150DIPS
4"	5.25	11	6.56	200	HD6914FM200DIPS
6"	7	14.5	8.6	150	HD6916FM150DIPS
6"	7	14.5	8.6	200	HD6916FM200DIPS
8"	7.5	16.25	10.72	150	HD6918FM150DIPS
8"	7.5	16.25	10.72	200	HD6918FM200DIPS
10"	7	15.5	13.17	150	HD69110FM150DIPS
10"	7	15.5	13.17	200	HD69110FM200DIPS
12"	8.75	19.25	15.97	150	HD69112FM150DIPS
12"	8.75	19.25	15.97	200	HD69112FM200DIPS
14"	9.75	21.25	17.4	150	HD69114FM150DIPS
14"	9.75	21.25	17.4	200	HD69114FM200DIPS
16"	8.5	19.5	19.9	150	HD69116FM150DIPS
16"	8.5	19.5	19.9	200	HD69116FM200DIPS
20"	7.75	18.75	23.66	150	HD69120FM150DIPS
20"	7.75	18.75	23.66	200	HD69120FM200DIPS
24"	7.25	18.25	27.9	150	HD69124FM150DIPS
24"	7.25	18.25	27.9	200	HD69124FM200DIPS



Description: DIPS HDPE WALL ANCHORS
 PLAIN-ENDS
 Material: HDPE
 Size: 4" - 24"
 CLASS 150, CLASS 200
 PSI RATINGS 150, 200

NOTE:

Fittings are manufactured and tested to the requirements of ASTM D3035, D3261, AWWA C901 or C906, and FM 1613. These fittings are tested to the requirements of ASTM D3261 and are compatible for heat fusion with any pipe and or fitting of compatible resin. Made from PE3408/3608 or PE4710 material. All raw material shall comply with NSF-61. Other OD's, SDR's and Pressure Ratings available upon request. Per FM 1613 and AWWA C906, the working pressure rating equals the pressure class with an allowance included in the WPR for pressure surge.
 FOR DISCLAIMER REFER TO FM DIMENSION CATALOG.