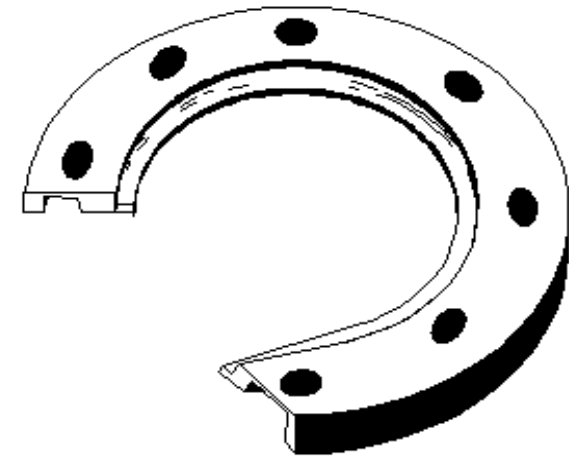
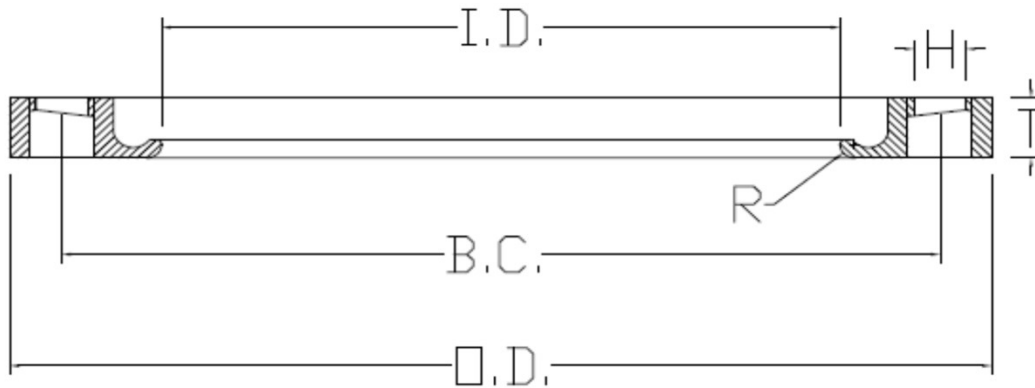


SPECIFIED FITTINGS, LLC

164 W. SMITH RD
BELLINGHAM, WA 98226
888-734-8846 (T)
888-734-8258 (F)
spec@specfit.com

483 STEVENSVILLE AIRPORT RD.
STEVENSVILLE, MT 59870
406-777-3466 (T)
406-777-7181 (F)
sales@specfit.com

www.specfit.com

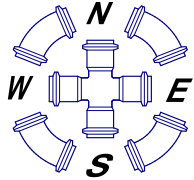


Description: IPS EPOXY COATED DUCTILE IRON FLANGE RINGS
Material: DUCTILE IRON
Size: 2" - 24"
CLASS 150, CLASS 200
PSI RATINGS 150, 200

NOTE:

Fittings are manufactured and tested to the requirements of ASTM D3035, D3261, AWWA C901 or C906, and FM 1613. These fittings are tested to the requirements of ASTM D3261 and are compatible for heat fusion with any pipe and or fitting of compatible resin. Made from PE3408/3608 or PE4710 material. All raw material shall comply with NSF-61. Other OD's, SDR's and Pressure Ratings available upon request. Per FM 1613 and AWWA C906, the working pressure rating equals the pressure class with an allowance included in the WPR for pressure surge.

FOR DISCLAIMER REFER TO FM DIMENSION CATALOG.



SPECIFIED FITTINGS, LLC

**164 W. SMITH RD
BELLINGHAM, WA 98226**

888-734-8846 (T)

888-734-8258 (F)

spec@specfit.com

483 STEVENSVILLE AIRPORT RD.

STEVENSVILLE, MT 59870

406-777-3466 (T)

406-777-7181 (F)

sales@specfit.com

www.specfit.com

IPS EPOXY COATED DUCTILE IRON FLANGE RING DIMENSION CHART

SIZE	O.D.	T	I.D.	BOLTS	H	B.C.	R	PRESSURE	PART #
								CLASS	
2"	6	0.75	2.46	4	0.75	4.75	0.31	150/200	BR2FM200
3"	7.5	0.94	3.6	4	0.75	6	0.38	150/200	BR3FM200
4"	9	0.94	4.6	8	0.75	7.5	0.44	150/200	BR4FM200
5"	10	0.94	5.69	8	0.88	8.5	0.44	150/200	BR5FM200
6"	11	1	6.75	8	0.88	9.5	0.5	150/200	BR6FM200
8"	13.5	1.12	8.75	8	0.88	11.75	0.5	150/200	BR8FM200
10"	16	1.19	10.92	12	1	14.25	0.5	150/200	BR10FM200
12"	19	1.25	12.92	12	1	17	0.5	150/200	BR12FM200
14"	21	1.38	14.18	12	1.13	18.75	0.5	150	BR14FM150
14"	21	1.67	14.38	12	1.13	18.75	0.4	200	BR14FM200
16"	23.5	1.77	16.38	16	1.13	21.25	0.4	150	BR16FM150
16"	23.5	1.77	16.38	16	1.13	21.25	0.4	200	BR16FM200
18"	25	1.97	18.38	16	1.25	22.75	0.38	150	BR18FM150
18"	25	1.97	18.38	16	1.25	22.75	0.38	200	BR18FM200
20"	27.5	2.13	20.38	20	1.25	25	0.31	150	BR20FM150
20"	27.5	2.13	20.38	20	1.25	25	0.31	200	BR20FM200
22"	29.5	2.13	22.38	20	1.38	27.25	0.31	150	BR22FM150
22"	29.5	2.13	22.38	20	1.38	27.25	0.31	200	BR22FR200
24"	32	2.13	24.38	20	1.38	29.5	0.31	150	BR24FM150
24"	32	2.13	24.38	20	1.38	29.5	0.31	200	BR24FM200