



Specified Fittings, LLC

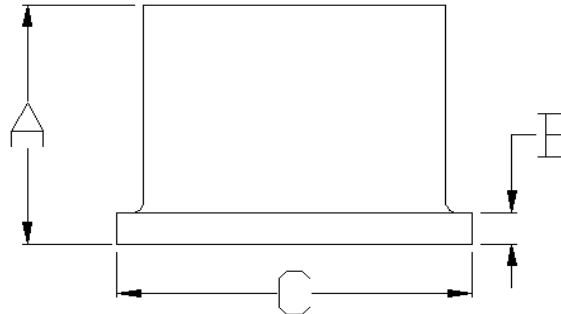
164 West Smith Road • PO Box 28157 • Bellingham, WA 98228-0157 | Email: sales@specfit.com

Bellingham: 360-398-7700 | 360-398-7051 Fax
 Stevensville: 406-777-3466 | 406-777-7181 Fax
 Mexico (Toll Free): 800-429-1705 | 800-574-1075 Fax



SIZE	A	B	C	PRESSURE	PART #
				CLASS	
2"	6.125	0.3	3.75	150	MHD5202FM150
2"	6	0.4	3.75	200	MHD5202FM200
3"	6.125	0.4	4.625	150	MHD5203FM150
3"	6	0.6	4.75	200	MHD5203FM200
4"	7.125	0.5	6.125	150	MHD5204FM150
4"	6	0.8	6.625	200	MHD5204FM200
6"	8	0.7	8.125	150	MHD5206FM150
6"	8.125	1.1	8.625	200	MHD5206FM200
8"	11	0.9	10.75	150	MHD5208FM150
8"	8.625	1.4	10.75	200	MHD5208FM200
10"	12	1.1	13	150	MHD52010FM150
10"	8.75	1.7	13	200	MHD52010FM200
12"	12	1.3	15.5	150	MHD52012FM150

SIZE	A	B	C	PRESSURE	PART #
				CLASS	
12"	9.125	2.1	15.125	200	MHD52012FM200
14"	11.5	1.5	17.375	150	MHD52014FM150
14"	12	2.3	17.375	200	MHD52014FM200
16"	11.5	1.7	20	150	MHD52016FM150
16"	12	2.6	20	200	MHD52016FM200
18"	11.5	1.9	20.625	150	MHD52018FM150
18"	12	2.5	21.12	200	MHD52018FM200
20"	12	2.3	23.5	150	MHD52020FM150
20"	12	2.78	23.5	200	MHD52020FM200
22"	12	2.5	25.6	150	MHD52022FM150
22"	12	3.06	25.6	200	MHD52022FM200
24"	14	2.9	27.9	150	MHD52024FM150
24"	14	3.33	28	200	MHD52024FM200



Description: IPS HDPE MOLDED FLANGE ADAPTER PLAIN-END
 Material: HDPE
 Size: 2" - 24"
 CLASS 150, CLASS 200
 PSI RATINGS 150, 200

Molded fittings are manufactured and tested to the requirements of ASTM D3035, D3261, AWWA C901 or C906, and FM 1613. These fittings are tested to the requirements of ASTM D3261 and are compatible for heat fusion with any pipe and or fitting of compatible resin. Made from PE3408/3608 or PE4710 material. All raw material shall comply with NSF-61. Other OD's, SDR's and Pressure Ratings available upon request. Per FM 1613 and AWWA C906, the working pressure rating equals the pressure class with an allowance included in the WPR for pressure surge.
 FOR DISCLAIMER REFER TO FM DIMENSION CATALOG.