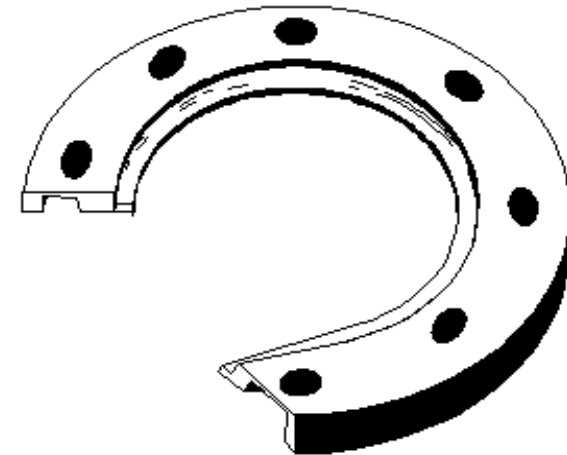
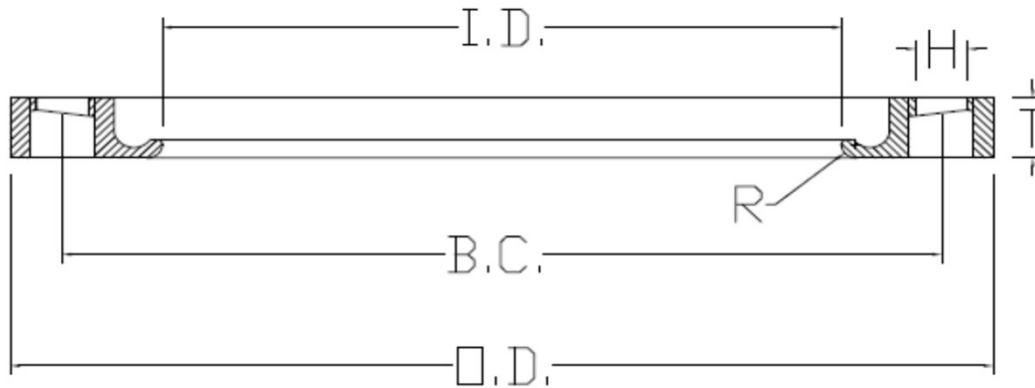


## SPECIFIED FITTINGS, LLC

164 W. SMITH RD  
 BELLINGHAM, WA 98226  
 888-734-8846 (T)  
 888-734-8258 (F)  
[spec@specfit.com](mailto:spec@specfit.com)

483 STEVENSVILLE AIRPORT RD.  
 STEVENSVILLE, MT 59870  
 406-777-3466 (T)  
 406-777-7181 (F)  
[sales@specfit.com](mailto:sales@specfit.com)

[www.specfit.com](http://www.specfit.com)

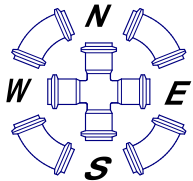


Description: IPS PRIMER COATED DUCTILE IRON FLANGE RINGS  
 Material: DUCTILE IRON  
 Size: 2" - 24"  
 CLASS 150, CLASS 200  
 PSI RATINGS 150, 200

**NOTE:**

Fittings are manufactured and tested to the requirements of ASTM D3035, D3261, AWWA C901 or C906, and FM 1613. These fittings are tested to the requirements of ASTM D3261 and are compatible for heat fusion with any pipe and or fitting of compatible resin. Made from PE3408/3608 or PE4710 material. All raw material shall comply with NSF-61. Other OD's, SDR's and Pressure Ratings available upon request. Per FM 1613 and AWWA C906, the working pressure rating equals the pressure class with an allowance included in the WPR for pressure surge.

FOR DISCLAIMER REFER TO FM DIMENSION CATALOG.



## **SPECIFIED FITTINGS, LLC**

**164 W. SMITH RD  
BELLINGHAM, WA 98226**

**888-734-8846 (T)**

**888-734-8258 (F)**

[spec@specfit.com](mailto:spec@specfit.com)

**483 STEVENSVILLE AIRPORT RD.**

**STEVENSVILLE, MT 59870**

**406-777-3466 (T)**

**406-777-7181 (F)**

[sales@specfit.com](mailto:sales@specfit.com)

[www.specfit.com](http://www.specfit.com)

### IPS PRIMER COATED DUCTILE IRON FLANGE RING DIMENSION CHART

SIZE	O.D.	T	I.D.	BOLTS	H	B.C.	R	PRESSURE	PART #
								CLASS	
2"	6	0.75	2.46	4	0.75	4.75	0.31	150/200	BR2FM200P
3"	7.5	0.94	3.6	4	0.75	6	0.38	150/200	BR3FM200P
4"	9	0.94	4.6	8	0.75	7.5	0.44	150/200	BR4FM200P
5"	10	0.94	5.69	8	0.88	8.5	0.44	150/200	BR5FM200P
6"	11	1	6.75	8	0.88	9.5	0.5	150/200	BR6FM200P
8"	13.5	1.12	8.75	8	0.88	11.75	0.5	150/200	BR8FM200P
10"	16	1.19	10.92	12	1	14.25	0.5	150/200	BR10FM200P
12"	19	1.25	12.92	12	1	17	0.5	150/200	BR12FM200P
14"	21	1.38	14.18	12	1.13	18.75	0.5	150	BR14FM150P
14"	21	1.67	14.38	12	1.13	18.75	0.4	200	BR14FM200P
16"	23.5	1.77	16.38	16	1.13	21.25	0.4	150	BR16FM150P
16"	23.5	1.77	16.38	16	1.13	21.25	0.4	200	BR16FM200P
18"	25	1.97	18.38	16	1.25	22.75	0.38	150	BR18FM150P
18"	25	1.97	18.38	16	1.25	22.75	0.38	200	BR18FM200P
20"	27.5	2.13	20.38	20	1.25	25	0.31	150	BR20FM150P
20"	27.5	2.13	20.38	20	1.25	25	0.31	200	BR20FM200P
22"	29.5	2.13	22.38	20	1.38	27.25	0.31	150	BR22FM150P
22"	29.5	2.13	22.38	20	1.38	27.25	0.31	200	BR22FM200P
24"	32	2.13	24.38	20	1.38	29.5	0.31	150	BR24FM150P
24"	32	2.13	24.38	20	1.38	29.5	0.31	200	BR24FM200P