



Specified Fittings, LLC

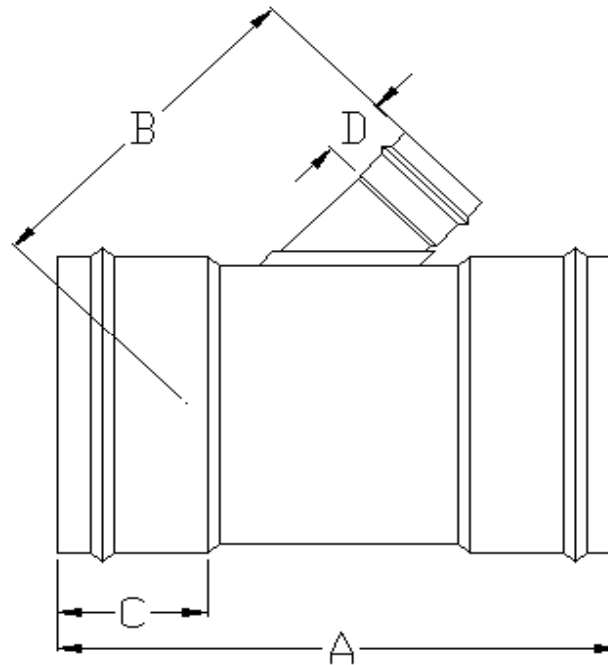
164 West Smith Road • PO Box 28157 • Bellingham, WA 98228-0157 | Email: sales@specfit.com

Bellingham: 360-398-7700 | 360-398-7051 Fax

Stevensville: 406-777-3466 | 406-777-7181 Fax

Mexico (Toll Free): 800-429-1705 | 800-574-1075 Fax

**SIGNED DRAWINGS MUST ACCOMPANY PURCHASE ORDER OR
DIMENSIONS OF FITTINGS WILL NOT BE GUARANTEED**



DISCLAIMER - PLEASE READ

- 1) All dimensions approximate, subject to change without notice
--Angle tolerance is +/- 2 degrees
--All other dimensions to +/- 1"
- 2) This drawing only applicable if a copy is referenced at time of order.
--Without a copy of drawing, fitting construction may differ from that shown.
- 3) Subject to Specified Fittings Standard Terms and Conditions.

Description: WYE
Material: SDR 35
Part #'s: 79920(4-27)
Configuration: GASKET X GASKET X GASKET

D.E.

Page #



**SPECIFIED
FITTINGS**

**164 WEST SMITH ROAD, PO BOX 28157
BELLINGHAM, WA 98228-0157**

**Toll-free telephone and fax
(888) 734-8846 (888) 734-8258 (F)
e-mail: sales@specfit.com**

**SIGNED DRAWINGS MUST ACCOMPANY PURCHASE ORDER OR
DIMENSIONS OF FITTINGS WILL NOT BE GUARANTEED**

SIZE	A	B	C	D
4	19	12	4.5	4.5
6 X 4	18	13.75	4	4.5
6	21.75	13.5	4	4
8 X 4	18.75	15.25	5	4.5
8 X 6	22.75	15	5	4
8	26.25	18	5	5
10 X 4	21.75	16	5.5	4.5
10 X 6	24.75	17.5	5.5	4
10 X 8	28.25	19.25	5.5	5
10	32.25	21.25	5.5	5.5
12 X 4	23.25	18	6.5	4.5
12 X 6	28.5	18	6.5	4
12 X 8	30.75	20.25	6.5	5
12 X 10	33.75	22.75	6.5	5.5
12	37	25	6.5	6.5
15 X 4	27.75	19	8.5	4.5
15 X 6	32	19.5	8.5	4
15 X 8	35.5	23.5	8.5	5
15 X 10	37.5	24.75	8.5	5.5
15 X 12	41	27	8.5	6.5
15	45.25	30.5	8.5	8.5
18 X 4	29.5	23.25	9.25	4.5
18 X 6	34.5	22.25	9.25	4
18 X 8	36.5	26	9.25	5
18 X 10	39.5	27	9.25	5.5
18 X 12	42.75	29.5	9.25	6.5
18 X 15	47	32.25	9.25	8.5
18	53.75	36	9.25	9.25

SIZE	A	B	C	D
21 X 4	34	24.75	10.25	4.5
21 X 6	38	24.75	10.25	4
21 X 8	41.5	27.5	10.25	5
21 X 10	44.5	29.5	10.25	5.5
21 X 12	47.75	31.75	10.25	6.5
21 X 15	52	34.75	10.25	8.5
21 X 18	58.75	38.5	10.25	9.25
21	63.5	41.5	10.25	10.25
24 X 4	36.75	26.75	11.5	4.5
24 X 6	40.75	26.75	11.5	4
24 X 8	44.25	29.5	11.5	5
24 X 10	47.25	31.5	11.5	5.5
24 X 12	50.5	33.75	11.5	6.5
24 X 15	54.75	36.75	11.5	8.5
24 X 18	61.5	40.5	11.5	9.25
24 X 21	66.25	42.75	11.5	10.25
24	71.25	46	11.5	11.5
27 X 4	39	29.25	12.5	4.5
27 X 6	43	29	12.5	4
27 X 8	46.5	32	12.5	5
27 X 10	49.5	33.75	12.5	5.5
27 X 12	52.75	36.25	12.5	6.5
27 X 15	57	39	12.5	8.5
27 X 18	63.75	42.75	12.5	9.25
27 X 21	68.5	45.25	12.5	10.25
27 X 24.	73.5	48.5	12.5	11.5
27	79	51.25	12.5	12.5