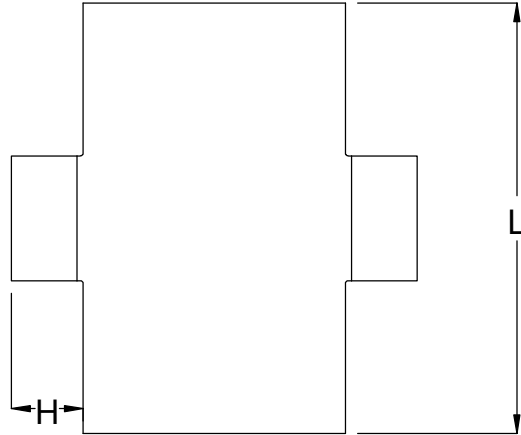




Specified Fittings, LLC

164 West Smith Road • PO Box 28157 • Bellingham, WA 98228-0157 | Email: sales@specfit.com

Bellingham: 360-398-7700 | 360-398-7051 Fax
 Stevensville: 406-777-3466 | 406-777-7181 Fax
 Mexico (Toll Free): 800-429-1705 | 800-574-1075 Fax



Fittings between 20" and 48" are designed to be fused on a 1648 or smaller field machine, If longer lengths are required, please contact Specified Fittings for special requirements.

DISCLAIMER - PLEASE READ

- 1) All dimensions approximate, subject to change without notice
 --Angle tolerance is +/- 2 degrees
 --All other dimensions to +/- 1"
- 2) This drawing only applicable if a copy is referenced at time of order.
 --Without a copy of drawing, fitting construction may differ from that shown.
- 3) Subject to Specified Fittings Standard Terms and Conditions.

| SIZE | L | H |
|-------|------|------|
| 8x4 | 23.5 | 6 |
| 10x4 | 23.5 | 6 |
| 10x6 | 26 | 8 |
| 12x4 | 26.5 | 6 |
| 12x6 | 29 | 8 |
| 12x8 | 31 | 8.5 |
| 14x4 | 26.5 | 6 |
| 14x6 | 29 | 8 |
| 14x8 | 31 | 8.5 |
| 16x6 | 29 | 8 |
| 16x8 | 31 | 8.5 |
| 16x10 | 33 | 8.5 |
| 18x6 | 31 | 8 |
| 18x8 | 33 | 8.5 |
| 18x10 | 35 | 8.5 |
| 18x12 | 37 | 10 |
| 20x6 | 31 | 8 |
| 20x8 | 33 | 8.5 |
| 20x10 | 35 | 8.5 |
| 20x12 | 37 | 10 |
| 20x14 | 39 | 10.5 |
| 22x6 | 35 | 8 |
| 22x8 | 37 | 8.5 |
| 22x10 | 39 | 8.5 |
| 22x12 | 41 | 10 |
| 22x14 | 43 | 10.5 |
| 22x16 | 45 | 10.5 |
| 24x6 | 35 | 8 |
| 24x8 | 37 | 8.5 |
| 24x10 | 39 | 8.5 |
| 24x12 | 41 | 10 |
| 24x14 | 43 | 10.5 |
| 24x16 | 45 | 10.5 |
| 26x6 | 43 | 8 |
| 26x8 | 45 | 8.5 |
| 26x10 | 47 | 8.5 |
| 26x12 | 49 | 10 |
| 26x14 | 51 | 10.5 |
| 26x16 | 53 | 10.5 |
| 26x18 | 55 | 11.5 |

| SIZE | L | H |
|-------|----|------|
| 28X6 | 43 | 8 |
| 28X8 | 45 | 8.5 |
| 28X10 | 47 | 8.5 |
| 28X12 | 49 | 10 |
| 28X14 | 51 | 10.5 |
| 28X16 | 53 | 10.5 |
| 28X18 | 55 | 11.5 |
| 28X20 | 57 | 11.5 |
| 30X6 | 47 | 8 |
| 30X8 | 49 | 8.5 |
| 30X10 | 51 | 8.5 |
| 30X12 | 53 | 10 |
| 30X14 | 55 | 10.5 |
| 30X16 | 57 | 10.5 |
| 30X18 | 59 | 11.5 |
| 30X20 | 61 | 11.5 |
| 30X22 | 63 | 13.5 |
| 32X6 | 47 | 8 |
| 32X8 | 49 | 8.5 |
| 32X10 | 51 | 8.5 |
| 32X12 | 53 | 10 |
| 32X14 | 55 | 10.5 |
| 32X16 | 57 | 10.5 |
| 32X18 | 59 | 11.5 |
| 32X20 | 61 | 11.5 |
| 32X22 | 63 | 13.5 |
| 34X6 | 47 | 8 |
| 34X8 | 49 | 8.5 |
| 34X10 | 51 | 8.5 |
| 34X12 | 53 | 10 |
| 34X14 | 55 | 10.5 |
| 34X16 | 57 | 1.5 |
| 34X18 | 59 | 11.5 |
| 34X20 | 61 | 11.5 |
| 34X24 | 65 | 13.5 |
| 36X6 | 55 | 8 |
| 36X8 | 57 | 8.5 |
| 36X10 | 59 | 8.5 |
| 36X12 | 61 | 10 |
| 36X14 | 63 | 10.5 |
| 36X16 | 65 | 10.5 |
| 36X18 | 67 | 11.5 |
| 36X20 | 69 | 11.5 |

| SIZE | RUN | BRANCH |
|-------|-----|--------|
| 36X22 | 71 | 13.5 |
| 36X24 | 73 | 13.5 |
| 36X26 | 75 | 16 |
| 42X6 | 55 | 8 |
| 42X8 | 57 | 8.5 |
| 42X10 | 59 | 8.5 |
| 42X12 | 61 | 10 |
| 42X14 | 63 | 10.5 |
| 42X16 | 65 | 10.5 |
| 42X18 | 67 | 11.5 |
| 42X20 | 69 | 11.5 |
| 42X22 | 71 | 13.5 |
| 42X24 | 73 | 13.5 |
| 42X26 | 75 | 16 |
| 42X28 | 77 | 16 |
| 42X30 | 79 | 18 |
| 48X6 | 55 | 8 |
| 48X8 | 57 | 8.5 |
| 48X10 | 59 | 8.5 |
| 48X12 | 61 | 10 |
| 48X14 | 63 | 10.5 |
| 48X16 | 65 | 10.5 |
| 48X18 | 67 | 11.5 |
| 48X20 | 69 | 11.5 |
| 48X24 | 73 | 13.5 |
| 48X30 | 79 | 18 |
| 48X32 | 81 | 18 |

TITLE
 HDPE FABRICATED CROSSES
 PLAIN-END/BUTT-FUSE, "PULLED"
 DR9-32.5 FULLY RATED
 DR7 DE-RATED
 PE4710

DATE
 8-10-18